

Includes 1, 2, 3, and 4 bedroom units | For rental information call: (410) 537-5000



ABOUT ALBEMARLE SQUARE

We make affordable housing convenient and comfortable in downtown Baltimore not far from Inner Harbor and Harbor View. We have 130 spacious one to four-bedroom apartments. You'll find education options for school age members of your family. We offer handicap accessible units, access to local bus, metro lines, and nearby medical services.

FEATURES

Assigned parking
Heating
Wheelchair accessible (rooms) 24-hour emergency maintenance

SCHOOLS

City Springs Elementary School, Digital Harbor High School, Dunbar High School, and The Commodore John Rodgers School

TRANSIT

Bus Routes: 63, 65, Blue, Brown, Lime, Orange, and Purple
Rail: Metro Subway Shot Tower Station and Johns Hopkins Station

HEALTHCARE

The Johns Hopkins Hospital, Mercy Medical Center, and University of Maryland Medical Center



*Wheelchair accessible apartments and common spaces

habc.org    @bmorehbc



Includes 1 and 2 bedroom units | For rental information call: (410) 433-5605



ABOUT ARBOR OAKS

At Arbor Oaks we exceed the expectations of affordable housing. We have more than 60 spacious one and two-bedroom apartments! We offer handicap accessible units, a beautifully landscaped community, access to local bus and metro lines and nearby medical service, including urgent care.

FEATURES

- 24 hour on-site Maintenance
- Wall to Wall Carpeting
- Central Air and Heat
- Full size appliances
- Breakfast Bar

SCHOOLS

Dulaney Day School, Govans Elementary School, Reginald F. Lewis High School, Mercy High School, and Tunbridge Public Charter School

TRANSIT

Senior/Disabled Shuttle Mobility
Bus Routes: 30, 33, Red, and Green

HEALTHCARE

MedStar Good Samaritan Hospital, University of Maryland St. Joseph Medical Center, and ChoiceOne Urgent Care



*Wheelchair accessible apartments and common spaces

Includes 1, 2, and 3 bedroom townhouses | For rental information call: (410) 361-9045



ABOUT BROOKLYN HOMES

Located in the Brooklyn/Curtis Bay Area with nearly 500 affordable units, this two-story family development has an array of apartments. Residents have access nearby schools and to shopping areas along Governor Ritchie Highway. We're close to a park, hospitals and offer access to local bus and metro lines.

FEATURES

- Community room
- Laundry hook-up in unit
- Off street parking
- Individually apartment-controlled heat and/or AC
- 24-hour emergency maintenance

SCHOOLS

Bay Brook Elementary, Curtis Bay Middle School, Benjamin Franklin High School, New Era Academy, and St. Veronica's Head Start

TRANSIT

- Senior/Disabled Shuttle MTA Mobility Van
- Bus Routes: 29 and Silver
- Rail: Patapsco Light Rail Station

HEALTHCARE

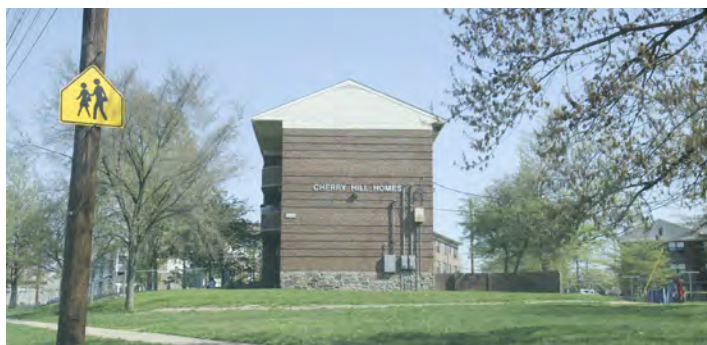
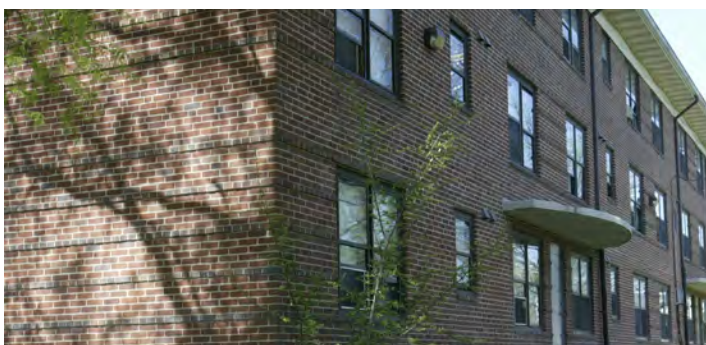
MedStar Harbor Hospital, University of MD Medical Center, and ExpressCare Urgent Care Center



*Wheelchair accessible apartments and common spaces

habc.org    @bmorehabc

Includes 1, 2, 3, 4, and 5 bedroom units | For rental information call: (410) 396-3004



ABOUT CHERRY HILL HOMES

Cherry Hill Homes offers nearly 1300 affordable units, neighbors a community of homeowners with nearby schools, is along bus routes, and light rail stops. Community amenities include a day care center and aquatic centers. We offer handicap accessible units and nearby medical service, including urgent care.

FEATURES

- Laundry facility(s) w/front loading machine
- Handicap parking spaces
- Off-street parking
- Individually controlled heat and/or AC
- 24-hour emergency maintenance

SCHOOLS

Cherry Hill Elementary, Patapsco Elementary/
Middle School, and Digital Harbor High School

TRANSIT

Bus Routes: 26, 29, 69, 70, 71 and City
Link Yellow
Rail: Light Rail Cherry Hill Station

HEALTHCARE

MedStar Harbor Hospital, University of
MD Medical Center, and ExpressCare
Urgent Care Center



*Wheelchair accessible apartments and common spaces

habc.org    @bmorehabc



Includes 1, 2, and 3 bedroom units | For rental information call: (410) 545-6316



ABOUT DOUGLASS HOMES

387 affordable units and most have a Harbor View! This family development has nearby schools and has an employment and empowerment training program. We offer handicap accessible units, access to local bus and light rail stops and nearby medical service, including urgent care.

FEATURES

- 24-hour emergency maintenance
- Cable ready
- Harbor view
- Dunbar Community Center

SCHOOLS

City Springs Elementary, Dunbar Middle School, Dunbar High School, and St. Michaels School

TRANSIT

Bus Routes: Blue, Brown, Green, Lime, and Purple
Rail: Subway Shot Tower Station and Johns Hopkins Station

HEALTHCARE

The Johns Hopkins Hospital, Mercy Medical Center, and University of Maryland Medical Center



*Wheelchair accessible apartments and common spaces

Includes 1, 2, and 3 bedroom units | For rental information call: (410) 396-0222



ABOUT GILMOR HOMES

548 units Located in the Sandtown-Winchester community, Gilmor neighbors other nearby affordable public housing developments. Empowerment services are available through Jobs Plus and a Drug Elimination Program. Residents access local bus routes and the Upton subway station for transportation.

FEATURES

- Off Street Parking
- Guest intercom
- Community room Playground
- Laundry hook-up in unit
- Individually controlled heat and/or AC
- 24-hour emergency maintenance

SCHOOLS

Matthew A. Henson Elementary, Gilmor Elementary School New Song Academy, Carver Vocational-Technical High School, and Douglas High School

TRANSIT

Bus Routes: Navy, Pink, and Lime
Rail: Metro Subway Upton Station and Penn North Station

HEALTHCARE

University of Maryland Medical Center, Division Health Center and Total Health Care



*Wheelchair accessible apartments and common spaces

habc.org    @bmorehabc



Includes 1, 2, 3, and 4 bedroom units | For rental information call: (410) 669-0330



ABOUT HERITAGE CROSSING

75 affordable housing units located in the Central District of Baltimore. Only minutes from downtown, the Inner Harbor, and Interstates 95/695. Conveniently located within walking distance to schools, major employers and recreational activities. Handicap accessible units, access to local bus and light rail stops and nearby urgent care.

FEATURES

Landscaped
Off-street parking
Unit controlled heat and/or AC
24-hour emergency maintenance
Police patrol Community center

SCHOOLS

Samuel Coleridge-Taylor Elementary,
Furman L. Templeton Preparatory Academy,
Joseph C. Briscoe Academy (Middle/High School)

TRANSIT

Bus Routes: 73, 80, and Pink
Rail: Metro Subway Upton Station, and Light Rail
N. Howard Street

HEALTHCARE

University of Maryland Medical Center, Baltimore
VA Medical Center, and Total Health Care



*Wheelchair accessible apartments and common spaces



Includes 1 and 2 bedroom units | For rental information call: (410) 644-4388



ABOUT HILLSIDE PARK

A mix of style and affordability in this quiet Beechfield residential neighborhood. 30 one and two bedroom garden style apartment homes offer several nearby MTA Bus Stops and is only minutes away to Mondawmin Mall. Hillside Park is located close to St. Agnes Hospital, Giant, Beechfield Elementary and Upland Park.

FEATURES

- Laundry in unit
- Off street parking
- Wheelchair accessible apartments
- Playground
- 24-hour emergency maintenance

SCHOOLS

Beechfield Elementary, Mt. Saint Joseph High School, and Western School of Technology

TRANSIT

Bus Route: Purple

HEALTHCARE

St. Agnes Hospital, South Baltimore County Medical Center, and ExpressCare Urgent Care Center

Includes 1, 2, 3, and 4 bedroom units | For rental information call: (410) 545-6140



ABOUT LATROBE HOMES

Located within the Old Town area of Baltimore City, Latrobe Homes is a family development made up of 669 units. Amenities include on-site management and a recently opened day care facility with a fenced play area. Residents have access to bus routes, nearby schools and Johns Hopkins Hospital.

FEATURES

- Laundry in unit
- Off Street Parking
- Playground
- 24-hour emergency maintenance

SCHOOLS

Johnston Square Elementary,
National Academy Foundation,
and Dunbar High School

TRANSIT

Bus Routes: 54, 56, Pink, Red, and
Lime
Rail: Metro Subway Shot Tower
Station and Johns Hopkins Station

HEALTHCARE

The Johns Hopkins Hospital and Jai
Medical Center



*Wheelchair accessible apartments and common spaces

habc.org    @bmorehabc



HOUSING
AUTHORITY of
BALTIMORE CITY

MCCULLOH HOMES (LOW -RISE)

570 West Preston Street, Baltimore, MD 21201

Includes 1, 2, 3, 4, and 5+ bedroom units | For rental information call: (410) 545-3660



ABOUT MCCULLOH HOMES

With 552 affordable housing units, McCulloh Homes is a family community. Amenities include self service laundry, on-site management and maintenance offices. Offering handicap accessible units, access to local bus routes, nearby schools, parks & medical facilities.

FEATURES

- Elevators
- Handicap parking spaces
- Police Patrol
- Maintenance
- Laundry hook-up in unit

SCHOOLS

Samuel Coleridge-Taylor Elementary, Furman L. Templeton Preparatory Academy, Booker

T. Washington Middle School, Renaissance cademy, and Joseph C. Briscoe High School

TRANSIT

Bus Routes: 53, 54, 73, 94, Lime, Pink, and Yellow
Rail: Metro Subway State Center Station and Light Rail N. Howard Street

HEALTHCARE

University of Maryland Medical Center, Mercy Hospital, and Baltimore VA Medical Center



*Wheelchair accessible apartments and common spaces

habc.org    @bmorehabc

MONASTERY GARDENS APARTMENTS

141 Thomas Guidera Circle, Baltimore, MD 21229

Includes 1, 2, and 3 bedroom units | For rental information call: (410) 532-2642X222



ABOUT MONASTERY GARDENS

This privately managed family development in Irvington has eleven spacious, 1, 2, and 3 bedroom affordable public housing units. This community is accessible to several schools and churches. Units are cable ready and residents benefits include around the clock maintenance availability and wall to wall carpeting.

FEATURES

- 24h emergency maintenance available on site
- Wall to Wall Carpeting
- Central Air
- Cable Ready
- Washer and Dryer hook-ups

SCHOOLS

Mary E. Rodman Elementary, Beechfield Elementary, Green Street Academy, Edmonson High School, and Mt. Saint Joseph High School

TRANSIT

Bus Routes: 29, 78, and Purple

HEALTHCARE

St. Agnes Hospital, Bon Secours Hospital, and FutureCare - Irvington



HOUSING
AUTHORITY of
BALTIMORE CITY

MONTPELIER'S CHOICE APARTMENTS

2801 Homewood Avenue, Baltimore, MD 21218

Includes 1, 2, and 3 bedroom units | For rental information call: (410) 662-7490



ABOUT MONTPELIER APARTMENTS

The prime Homewood Ave location is convenient to downtown. Choose from 1 to 3 bedroom options. Montpelier's Choice Apartments is located in the Midway Coldstream Neighborhood in Baltimore, MD.

FEATURES

- Wall to Wall Carpeting
- Central Air and Heat
- Washer and Dryer Hook-up
- Cable ready
- Security Alarm Systems

SCHOOLS

Abbottston Elementary, The Stadium School, and Baltimore City College

TRANSIT

Bus Routes: 22, 53, and City Green

HEALTHCARE

Med Star Union Memorial Hospital, Loch Raven VA Medical Center, and Concerted Care Group



*Wheelchair accessible apartments and common spaces

habc.org @bmorehabc



Includes 2 and 3 Bedroom units | For rental information call: (410) 545-3666



ABOUT O'DONNELL HEIGHTS

This development has 230 units in southeast Baltimore. It's near Dundalk and is surrounded by memorial parks and owner-occupied townhouses. It offers handicap accessible units, local bus routes, nearby schools and is close to Bayview Hospital.

FEATURES

Small pets allowed
Recreational facilities

SCHOOLS

Graceland Park-O'Donnell Elementary, Holabird Elementary/Middle School, Patterson High School, and Dundalk High School

TRANSIT

Bus Routes: 21, 22, 63, 65, Navy, and Orange

HEALTHCARE

Johns Hopkins Hospital, Patient First (Bay View), and ExpressCare Urgent Care Center



Includes 1, 2, 3, 4, and 5+ bedroom units | For rental information call: (410) 396-9903



ABOUT PERKINS HOMES

629 affordable home units neighboring Little Italy is just what you need to simplify your home search. Easy access to The Inner Harbor. The community is located within the East Harbor Empowerment Zone of the Fells Point area. Handicap units available, nearby elementary schools, hospitals, and several bus routes.

FEATURES

- Youth Recreation Center
- Small pets allowed
- Broadway Market nearby
- 24-hour emergency maintenance

SCHOOLS

City Springs Elementary/Middle School, Wolfe Street Academy, and Dunbar High School.

TRANSIT

Bus Routes: 63, 65, 104, 150, Lime, Orange, Navy, Green, and Brown

HEALTHCARE

Johns Hopkins Hospital, Church Home and Hospital, Mercy Medical Center, and Urgent Care Kaiser Permanente



*Wheelchair accessible apartments and common spaces



PLEASANT VIEW GARDENS

201 Aisquith Street, Baltimore, MD 21202

Includes 1, 2, 3, and 4 bedroom units | For rental information call: (410) 534-6182



ABOUT PLEASANT VIEW GARDENS

Tucked in the Hopkins-Midwest neighborhood and boasting 201 rental townhouses that range from one to four bedrooms and a 110-unit senior building. Amenities for seniors include laundry facilities, security, and an on-site social worker. Townhomes offer a choice of five playgrounds. Nearby schools, hospital and bus routes.

FEATURES

- Playground(s)
- Ball fields
- Laundry hook-up in unit
- Individually controlled heat and/or AC

SCHOOLS

City Springs Elementary, Johnston Square Elementary, National Academy Foundation, and Dunbar High School

TRANSIT

Bus Routes: 54, Blue, Orange, Purple, Red, Lime, Pink, Brown, and Green
Rail: Metro Subway Shot Tower Station and Johns Hopkins Station

HEALTHCARE

Johns Hopkins Hospital, Church Home & Hospital, Mercy Medical Center, and Urgent Care Kaiser Permanente



*Wheelchair accessible apartments and common spaces



Includes 1, 2, and 3 bedroom units | For rental information call: (410) 669-2290



ABOUT POE HOMES

Established in 1940, Poe Homes remains historic as HABC's the oldest development. With 288 units, home sizes vary between one to three bedrooms. Community amenities include a smoke free environment, playground, business center, high speed internet access and a club house. Handicap units available, nearby schools, hospitals and bus routes.

FEATURES

- 24-hour emergency maintenance
- Police patrol
- Off-street parking
- Common Spaces
- Playgrounds
- Laundry Hookup in Unit

SCHOOLS

James McKenry Elementary/Middle School,
Francis Wood High School and Joseph C.
Briscoe School

TRANSIT

Bus Routes: 70, 71, 73, 78, 80, Orange, and
Purple
Rail: Metro Subway Upton Station, State Center
Station, and Light Rail Lexington Street

HEALTHCARE

University of Maryland Medical Center, Urgent
Care, and Mercy Medical Center



*Wheelchair accessible apartments and common spaces



Includes 3, 4, and 5 bedroom units | For rental information call: (410) 396-3206



ABOUT ROSEMONT/DUKELAND

The Rosemont/Dukeland is a family housing development with 136 units located in the Rosemont community. The Rosemont/Dukeland is bordered by Pressbury Street to the west, Poplar Grove Road to the east, Dukeland Street to the south and North Avenue to the north. Within walking distance of Gwynns Falls Park.

FEATURES

Social workers | drug elimination program
Lillian Jones Recreation Center
Margaret Ruffin Day Care Center
Nearby shopping
24-hour emergency maintenance

TRANSIT

Bus Routes: 29, 38, 79, 80, Gold Rail: Metro Subway
Penn North Station

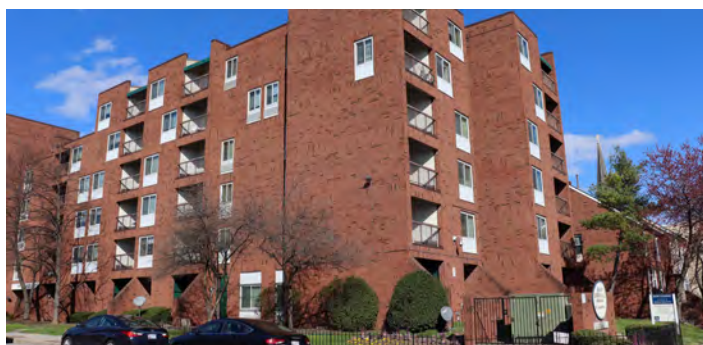
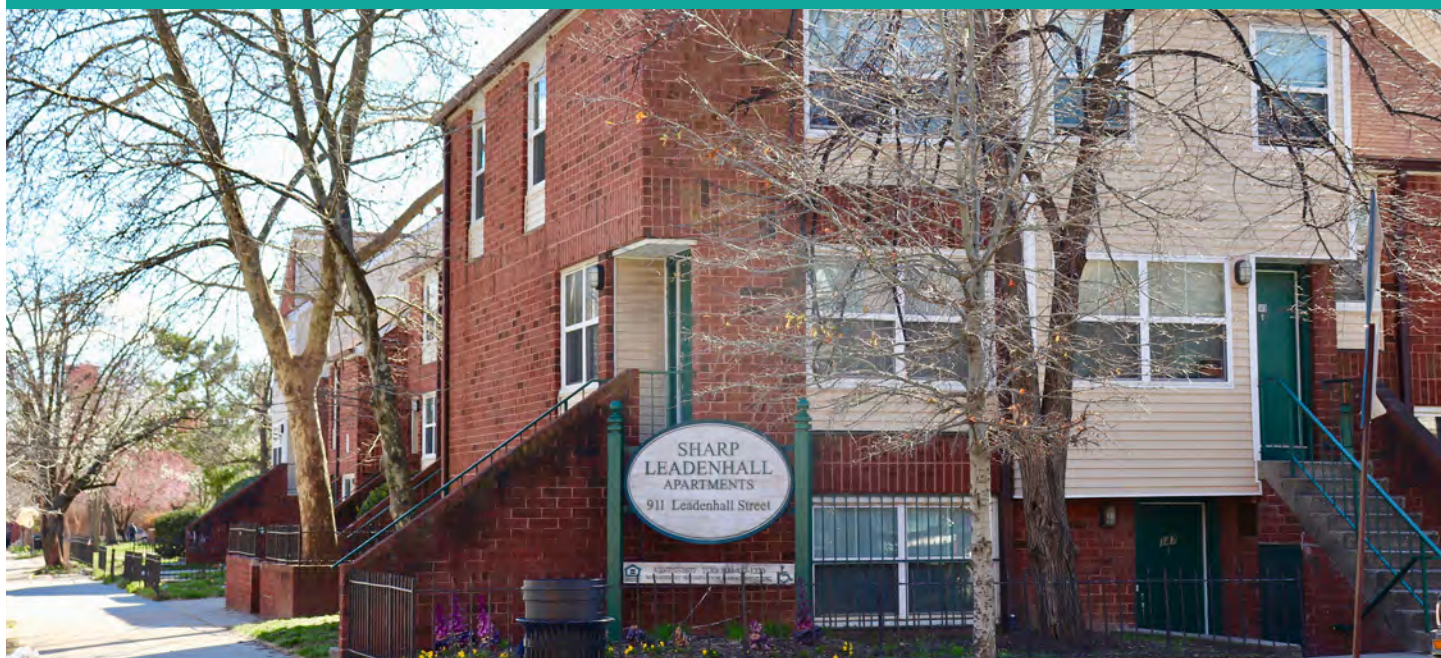
SCHOOLS

Belmont Elementary, Calverton Elementary/
Middle School, Douglass High School, and
KASA High School

HEALTHCARE

West Baltimore General Hospital, Grace Medical
Center, and St. Agnes Hospital

Includes 1, 2, 3, 4, and 5+ bedroom units | For rental information call: (410) 752-5750



ABOUT SHARP LEADENHALL

A 23 unit development so historic and vibrant, making living in a great community affordable! Only minutes from Ravens Stadium, Cross Street Market and Federal Hill, amenities are just around the corner. Also convenient to the highway and several forms of public transit including the light rail. Handicap units available, nearby medical facilities.

FEATURES

- 24 hour emergency maintenance
- Air conditioning
- Community center
- Onsite laundry
- Onsite parking
- Resident Service Program

SCHOOLS

Sharp Leadenhall Elementary, Digital Harbor High School, and Holy Cross School

TRANSIT

Bus Routes: 67, 71, 94, 164, Silver, and Purple
Rail: Light Rail Camden Station and Hamburg Street

HEALTHCARE

Johns Hopkins Hospital, Med Star Harbor Hospital, and Urgent Care: Federal Hill Medical Center



*Wheelchair accessible apartments and common spaces

habc.org    @bmorehabc

Includes 1, 2, 3, 4, and 5+ bedroom units | For rental information call: (410) 545-6316



ABOUT SOMERSET EXTENSION

Southeast of the Old Town Mall with 65 affordable housing units, this family low-rise development is convenient to a variety of schools, churches and stores. Amenities include: family support services, a community center, Cub Scouts, and offer a Harbor view! Nearby hospital and bus routes. Parking available.

FEATURES

- Parking
- Daycare
- Maintenance
- Police patrols
- Community building

SCHOOLS

City Springs Elementary, Johnston Square Elementary, National Academy Foundation, and Dunbar High School

TRANSIT

Bus Routes: 54, Blue, Orange, Purple, Red, Lime, Pink, Brown, and Green
Rail: Metro Subway Shot Tower Station and Johns Hopkins Station

HEALTHCARE

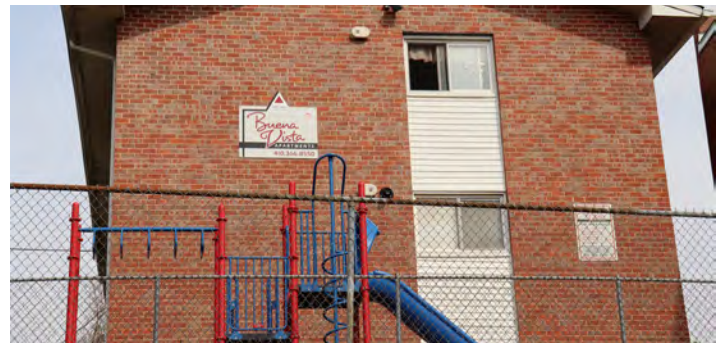
Johns Hopkins Hospital, Church Home & Hospital, Mercy Medical Center, and Jai Medical Center



*Wheelchair accessible apartments and common spaces

habc.org    @bmorehabc

Includes 1, 2, 3, and 4 bedroom units | For rental information call: (410) 366-8550



ABOUT ST. AMBROSE

St. Ambrose is a privately managed family development with 1 to 4 bedroom public housing units. St. Ambrose is located in the lively neighborhood of Hampden which has many shopping, recreational and dining options.

FEATURES

- Playground
- Central Air and Heat
- Off street parking
- 24 Hour Emergency Maintenance

SCHOOLS

- Medfield Heights Elementary, Roland Park Elementary/Middle School, Independence School Local I, Douglass High School

TRANSIT

- Bus Routes: 21, 22, and 94
- Rail: Light Rail Woodberry Southbound

HEALTHCARE

- Medstar Union Memorial Hospital, Sinai Hospital, and ChoiceOne Urgent Care - Rotunda



HOUSING
AUTHORITY of
BALTIMORE CITY

TOWNES AT THE TERRACES

800 W. Saratoga Street, Baltimore, MD 21201

Includes 2, 3, and 4 bedroom units | For rental information call: (410) 234-3681



ABOUT TOWNES AT THE TERRACES

Located in Poppleton, The Townes at the Terraces is a HOPE VI family development. With 203 affordable public housing townhouses, only minutes away from Lexington Market and the University of Maryland Hospital, this development is convenient! Community amenities include nearby schools, handicap accessible units and access to bus routes.

FEATURES

Playground
High Speed Internet Access Air
Conditioning
Smoke Free

SCHOOLS

James McKenry Elementary/Middle
School, and Francis Wood High
School

TRANSIT

Bus Routes: 71, 80, Purple, and Orange

HEALTHCARE

University of Maryland Medical Center,
Urgent Care UMMC, and Johns Hopkins
Hospital



*Wheelchair accessible apartments and common spaces

habc.org    @bmorehabc

Includes 1, 2, and 3 bedroom units | For rental information call: (410) 945-8015



ABOUT WEST HILLS SQUARE

Spacious living at an affordable price is what you will find in this West Hills neighborhood! With 11 units amenities include smoke free options, high-speed internet access, and convenient on-site parking options. Nearby to schools, bus routes and shopping.

FEATURES

- 24h Maintenance
- New appliances and kitchen cabinets
- Wall to Wall Carpeting
- Cable Ready
- Central Air and Heat

SCHOOLS

Thomas Jefferson Elementary/Middle School, and Edmondson West Side High School

TRANSIT

Bus Routes: 77, 78, and Blue

HEALTHCARE

St. Agnes Hospital, Bon Secours Hospital, and Patient First - Catonsville



*Wheelchair accessible apartments and common spaces

habc.org    @bmorehabc



Includes 1, 2, 3, and 4 bedroom units | For rental information call: (410) 545-7962



ABOUT WESTPORT HOMES

252 affordable housing units located near Florence Cummings Park, Westport Homes is close to I-95/I-295. The grounds are patrolled. Residents have access to a community building and nearby light rail and bus routes.

FEATURES

- Maintenance
- Police patrol
- Community building

SCHOOLS

- Westport Academy and Edmondson West Side High School

TRANSIT

- Bus Routes: 26, 69, 70, 71, and 73
- Rail: Westport Light Rail Station

HEALTHCARE

- St. Agnes Hospital, Med Star Harbor Hospital, and ExpressCare Urgent Care Center